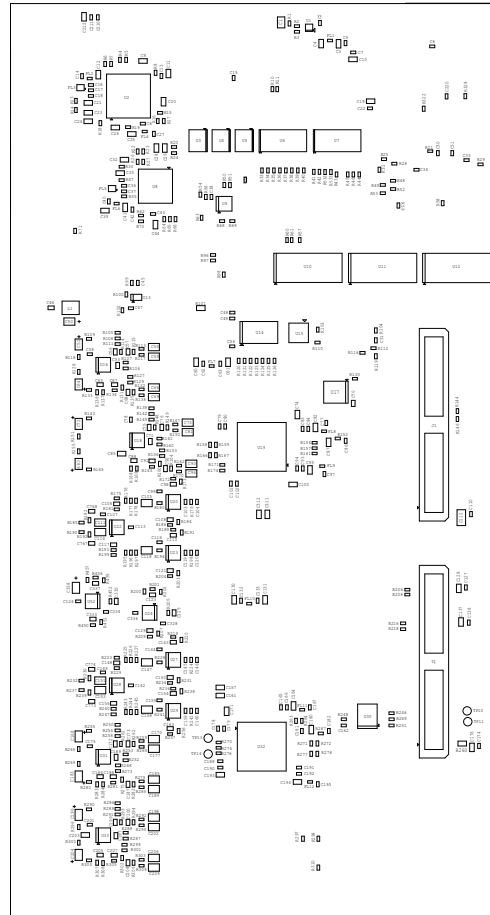



PROC086 E3 ASSEMBLY TOP

ASSEMBLY NOTES:-

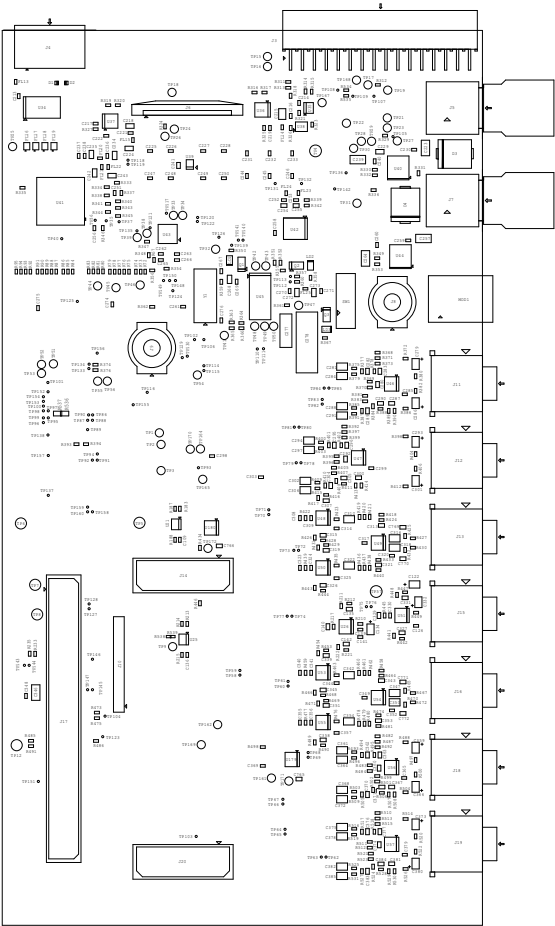
- 1 - All MSL components should be baked as per JEDEC standard.
- 2 - PCB should be baked at 120 degree for 8 hours.
- 3 - Board assembly must comply with workmanship standards IPC-A-610 Class 2, unless otherwise specified
- 4 - These assemblies are ESD sensitive, ESD precautions shall be observed.
- 5 - These assemblies must be clean and free from flux and all contaminants. Use of no clean flux is not acceptable.
- 6 - Provide serial numbers to the assembled boards for identification.
- 7 - The assembled board are wrapped in ESD Covers(individual) and packed securely before shipment.




 <b>TEXAS INSTRUMENTS</b>		PROC086
BOARD NAME: PROC086 JTX INFOTAINMENT EXP BRD	REV: E3	DESCRIPTION: ASSEMBLY TOP
SCALE: 1	DATE: 23/08/2019	SHEET 01 OF 02

PROC086 E3 ASSEMBLY BOTTOM

- ASSEMBLY NOTES:-
- 1 - All MEL components should be baked as per JEDEC standard.
  - 2 - PCB should be baked at 120 degree for 8 hours.
  - 3 - Board assembly must comply with workmanship standards IPC-A-610 Class 2, unless otherwise specified
  - 4 - These assemblies are ESD sensitive, ESD precautions shall be observed.
  - 5 - These assemblies must be clean and free from flux and all contaminants. Use of no clean flux is not acceptable.
  - 6 - Provide serial numbers to the assembled boards for identification.
  - 7 - The assembled board are wrapped in ESD Covers(individual) and packed securely before shipment.



 TEXAS INSTRUMENTS		PROC086
BOARD NAME: PROC086 J7X INFOTAINMENT EXP BRD	REV: E3	DESCRIPTION:ASSEMBLY BOTTOM
SCALE: 1	DATE: 23/08/2019 SHEET 02 OF 02	